

FOR NEUTRALIZING CONDENSATE FROM HIGH EFFICIENCY FUEL-FIRED FURNACES, BOILERS, AND TANKLESS WATER HEATERS

- Complete line-up includes throwaway canister, refillable, and tank designs for the market
- Prevents acidic condensate from corroding drain systems
- Helps maintain a neutral environment for bacteria in septic systems
- Refillable condensate neutralizers are most cost effective approach overs the appliance's service life
- Refillable condensate neutralization tank with pump for applications that require neutralized condensate to be removed
- Low-profile commercial neutralization tank with several piping options for fast and versatile installation
- Wall mounted refillable design for tight installation

Water Treatment Products

pH-Treat™



Description

Nu-Calgon's pH-Treat neutralizers address acidic condensate produced by high efficiency furnaces, boilers and water heaters before it goes to drain. If left untreated, the condensate produced by these appliances can potentially harm the environment and drainage systems over time due to its low pH (typically 2 to 4). The pH-Treat line-up provides customer options based on cost of ownership, maximum install versatility, range for different system types, and whether there is an available drain nearby.

Application

Installing condensate neutralizers on the condensate line of high efficiency furnaces is good service practice. Furthermore, local and state codes can mandate that acidic condensate is addressed prior to its release into the environment or waste water systems. This guidance is located in The National Plumbing Code as well as the International Plumbing Code, standard here:

IPC 803.1 Neutralizing device required for corrosive wastes.

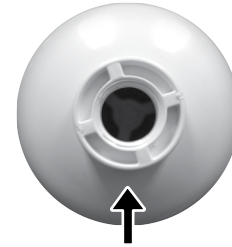
Corrosive liquids, spent acids or other harmful chemicals that destroy or injure a drain, sewer, soil or waste pipe, or create noxious or toxic fumes or interfere with sewage treatment processes shall not be discharged into the plumbing system without being thoroughly diluted, neutralized or treated by passing through an approved dilution or neutralizing device. Such devices shall be automatically provided with a sufficient supply of diluting water or neutralizing medium so as to make the contents noninjurious before discharge into the drainage system. The nature of the corrosive or harmful waste and the method of its treatment or dilution shall be approved prior to installation.



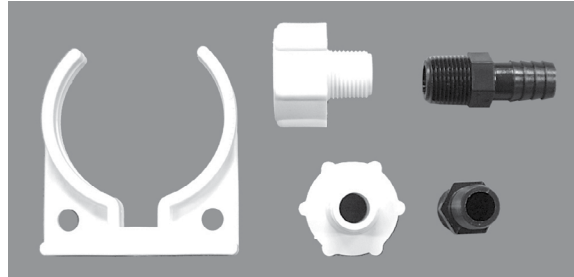
pH-Treat Inline Disposable

Part Number: 4720-06

- Throwaway cartridge design – media not refillable
- Appliance Sizing: 225,000 BTU/hr or 1.0 gal/hr condensate flow rate
- Cartridge housing: 2.5" dia. X 12" long with 3/8" FPT
- Center fittings, gravity feed design
- Install orientation: vertical
- Packaged with 1/2" barb fittings, thread adaptors, mounting clip
- Expected one year service life or when pH falls below 6



3/8" FPT Connections



pH-Treat Wall Mount Refillable

Part Number: 4720-08

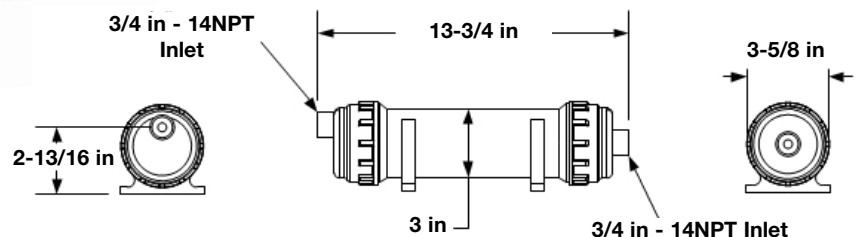
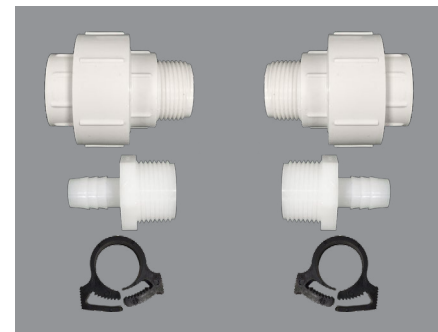
- Wall mounted refillable design for tight installation
- Appliance Sizing: 400,000 BTU/hr or 1.6 gal/hr condensate flow rate
- Patented manual reset float system indicates if the unit has become restricted
- Integral bypass feature prevents condensate backflow into appliance
- Reversible for fast and easy installation
- Neutralized condensate is more environmentally friendly
- Helps maintain a neutral environment for bacteria in septic systems
- Suitable for use on all types of Natural Gas and Propane appliances
- Includes initial charge of neutralizing media
- **Replacement pH-Treat Media: p/n: 4720-11**
- Media wt. 3 lbs



pH-Treat Inline Refillable

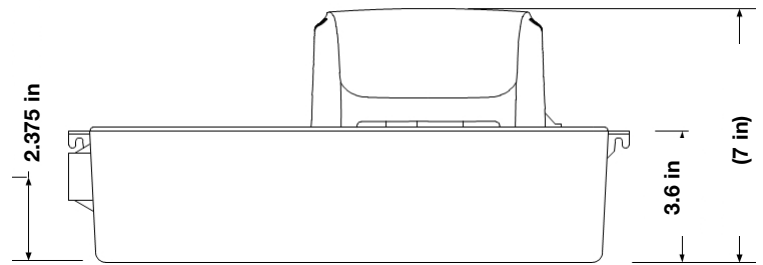
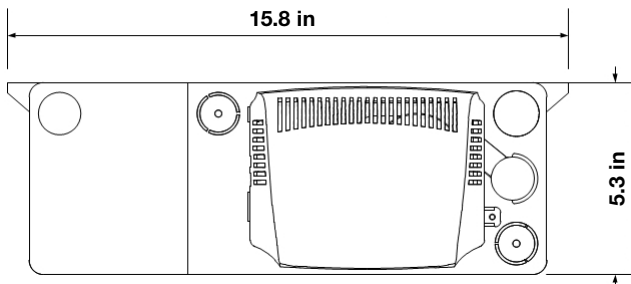
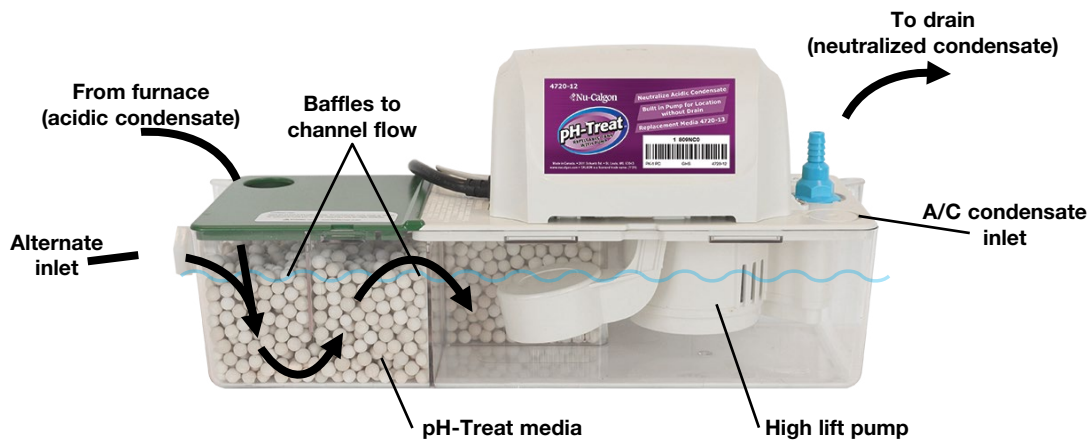
Part Number: 4720-10

- Refillable capsule design- refilling media only saves cost overtime
- Appliance Sizing: 400,000 BTU/hr or 1.6 gal/hr condensate flow rate
- Offset fittings, gravity feed design
- Install orientation: vertical or horizontal
- Low profile design for appliances with near floor condensate drain
- Packaged with threaded o-ring seal adaptors for serviceability ease
- Supplied with two barb fittings, hose clips, mounting brackets and initial charge of pH Treat neutralizing media
- Expected one year service life or when pH falls below 6
- **Replacement pH-Treat Media: p/n: 4720-11**
- Media wt. 3 lbs



pH-Treat Refillable Tank with Pump
Part Number: 4720-12

- Refillable tank design
- Pump removes neutralized condensate when drain is not nearby
- Equipped with high level float switch to connect to system interlock
- Maximum pump head: 20 feet
- Appliance Sizing: 500,000 BTU/hr or 1.9 gal/hr condensate flow rate
- Install orientation: horizontal
- Low profile design for appliances with near floor condensate drain
- Made from corrosion resistance materials
- One gallon tank with baffles designed to channel flow through pH-Treat media for complete neutralization
- Supplied with initial charge of pH-Treat neutralizing media and 20 ft of 3/8" vinyl tubing
- Media service life is one year or when pH falls below 6
- **Replacement pH-Treat Media: p/n: 4720-13**
 - Media wt. 4 lbs



Electrical:

Pump: 120VAC 60Hz, 87W, 0.89Amps
 High level safety switch rating: 125 or 250VAC 6A, 125VDC 0.4A, 250VDC 0.3A

Pump Performance:

Submerged pump is self-priming
 74 GPH at free flow
 32 GPH at 20 ft head

Pump is certified to CAN/CSA STD C22.2 no. 108

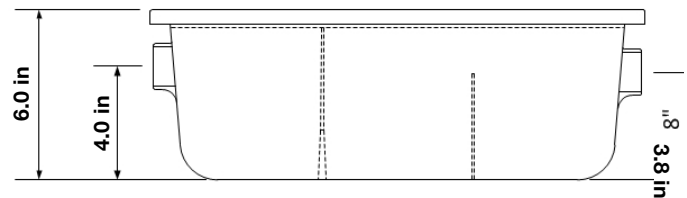
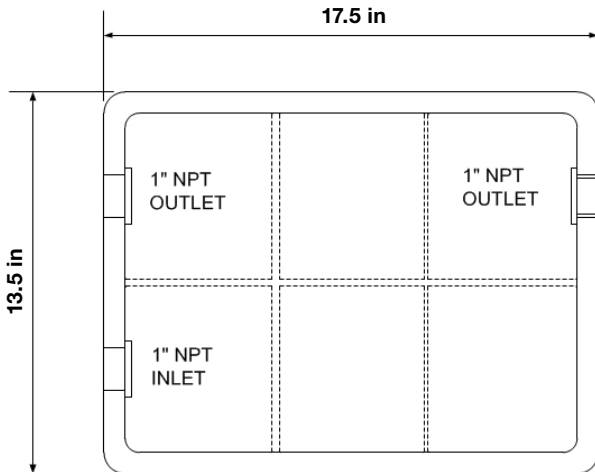
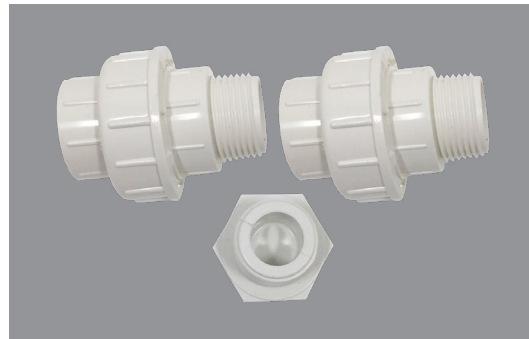


4007096
 Pump conforms to ANSI/UL STD 778

pH-Treat Commercial Refillable

Part Number: 4720-14

- Refillable tank design for commercial applications
- Appliance Sizing: 3,000,000 BTU/hr or 20 gal/hr condensate flow rate
- Low profile design for appliances with near floor condensate drain
- Constructed with durable and corrosion resistant polypropylene
- 3.5 gallon tank with baffles to channel flow for complete neutralization
- Two option piping configuration for fast and versatile installation
- Supplied with two 1" NPT x PVC unions and 1" NPT x PVC plug
- Supplied with initial charge of pH-Treat neutralizer media
- Integral bypass feature prevents condensate backflow into appliance
- Media service life is one year or when pH falls below 6
- **Replacement pH-Treat Media: p/n: 4720-15**
- **Media wt. 32 lbs**



Part Number	Description
4720-11	Inline or Wall Mount Refill (3 lbs)
4720-13	Tank with Pump Refill (4 lbs)
4720-15	Commercial Refill (32 lbs)