

Nu-Calgon

LED

# NuStart™

Compressor Soft Starter

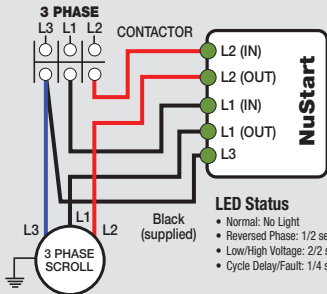
5010-30

208/230 VAC, Three Phase  
50/60 Hz, 04-28A FLA/RLA

## Requires a Contactor

Use Flat blade or #2  
Phillips Head  
Screwdriver.  
Tightening torque  
11.5 lb-in (1.3Nm)

Starts on  
contactor closure



Scan To  
Learn More

